

**ADDENDUM NO. ONE (1)
TOWN OF BRASELTON, GEORGIA
EQUIPMENT BUILDING
ISSUED SEPTEMBER 13, 2017**

RE: REBID EQUIPMENT BUILDING
PROJECT 15-035
Braselton, Georgia

FROM: ENGINEERING MANAGEMENT, INC.
303 SWANSON DRIVE
LAWRENCEVILLE, GA 30046
Don Baker, P.E.
770-962-1387

TO: PROSPECTIVE BIDDERS

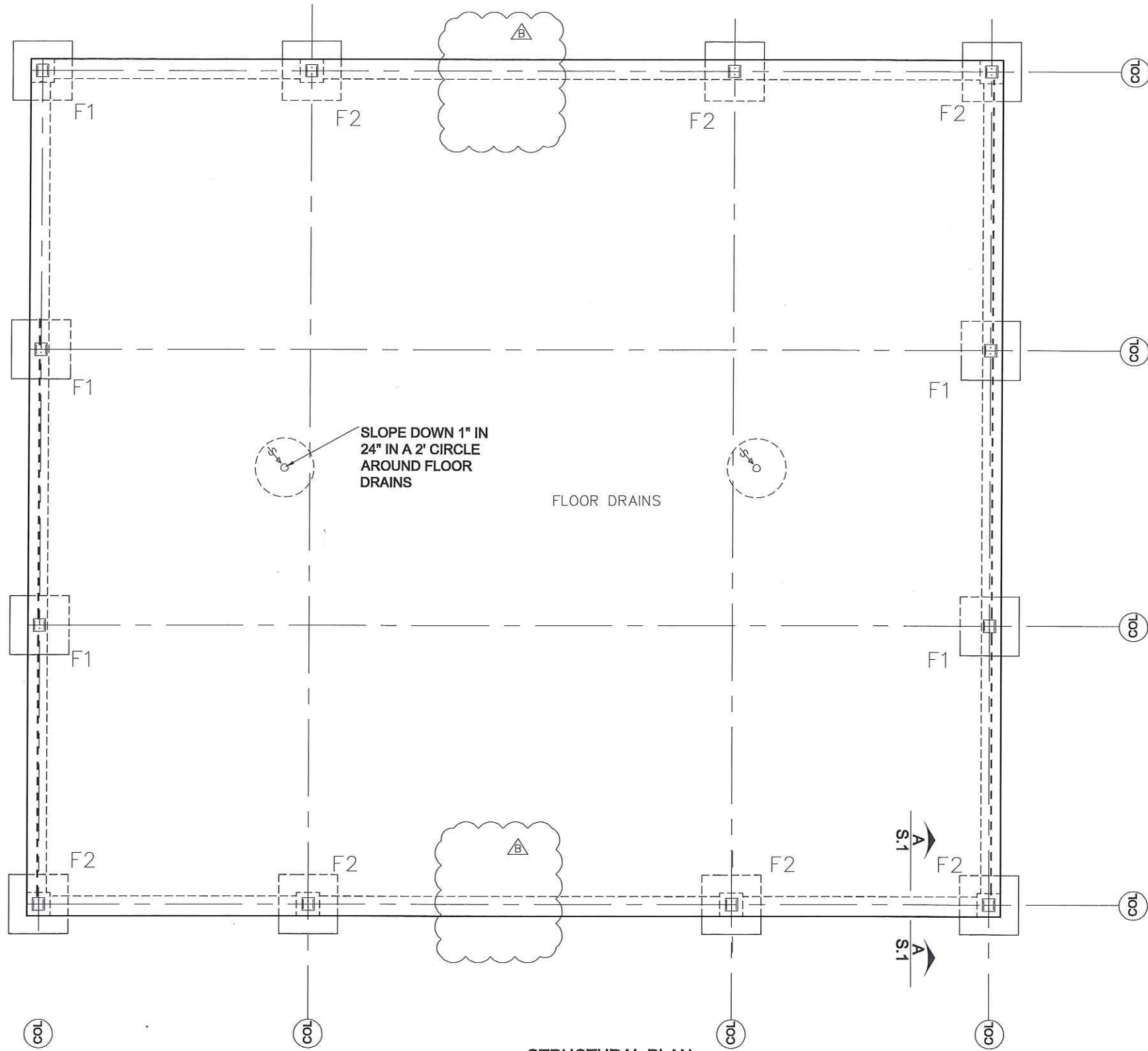
This Addendum forms a part of the Contract Documents and Drawings, and modifies the original bidding documents dated August 2017.

The following items of the Contract Documents are modified as part of this Addendum:

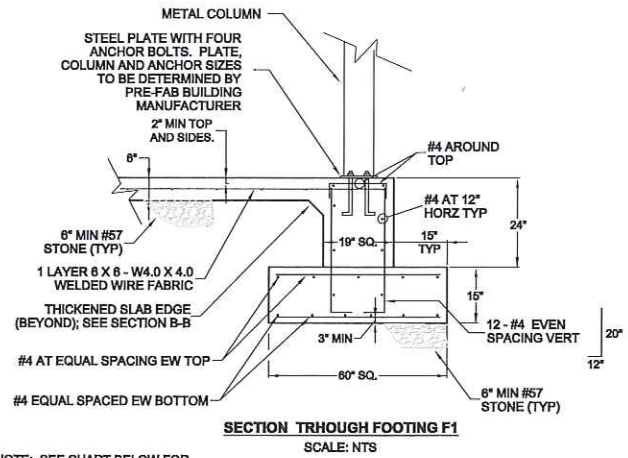
DRAWINGS:

Sheet S1 – Two “F2” footings were removed from the drawings. They were removed because the revised building plan for the rebid has one less column line than the original bid.

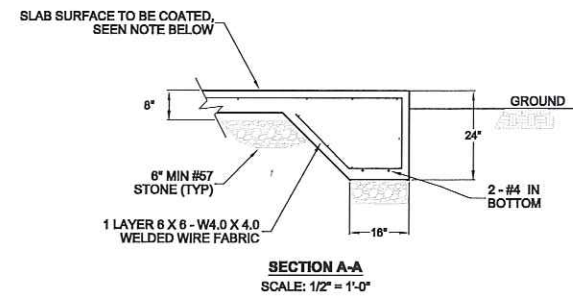
END OF ADDENDUM NO. 1



STRUCTURAL PLAN
1/4" = 1'-0"



NOTE: SEE CHART BELOW FOR FOOTING DIMENSIONS AND REBAR SIZES AND QUANTITIES



- SLAB SURFACE COATING**
1. SHERWIN WILLIAMS ARMORSEAL 8100. PART A B70-8100 SERIES GLOSS. PART B B70V8100 HARDENER.
 2. SURFACE PREP: REFER TO SSPC-SP13/NACE 6, OR ICRI NO. 310.2R, CSP 1-3. SURFACES SHALL BE THOROUGHLY CLEANED AND DRIED. CONCRETE AND MORTAR MUST BE CURED AT LEAST 28 DAYS @75°F. REMOVE ALL LOOSE MORTAR AND FOREIGN MATERIAL. SURFACE MUST BE FREE OF LANTANCE, CONCRETE DUST, DIRT, FORM RELEASE AGENTS, MOISTURE CURING MEMBRANES, LOOSE CEMENT AND HARDENERS. FILL BUG HOLES, AIR POCKETS AND OTHER VOIDS WITH STEE-SEAM FT910. PRIMER REQUIRED.
 3. APPLICATION CONDITIONS: 50°F MINIMUM, 100°F MAXIMUM (AIR, SURFACE, AND MATERIAL). RELATIVE HUMIDITY MAXIMUM OF 85 PERCENT.
 4. APPLICATION EQUIPMENT: REDUCER/CLEAN UP - WATER. CLEAR/ULTRADEEP TINT BASE REQUIRES REDUCTION OF 5 PERCENT BY VOLUME. BRUSH - NYLON/POLYESTER OR NATURAL BRISTLE. REDUCTION - AS NEEDED UP TO 10 PERCENT BY VOLUME, FOR PRIMER COAT ONLY. ROLLER - 1/4" - 3/8" WOVEN WITH SOLVENT RESISTANT CORE. REDUCTION - AS NEEDED UP TO 10 PERCENT BY VOLUME, FOR PRIMER COAT ONLY.

FOOTING DIMENSIONS AND REBAR SIZES AND QUANTITIES

MARK	SIZE	THICKNESS	TOP BAR	BOTTOM BAR	DOWEL	DOWEL LENGTH
F1	5'X5'	15"	(8) #4 E.W.	(8) #4 E.W.	(12) #4	1'-8"
F2	6'X6'	15"	(8) #5 E.W.	(8) #5 E.W.	(12) #4	2'-8"

ENGINEERING MANAGEMENT INC. 1984 ALL RIGHTS RESERVED. THESE CONSTRUCTION DOCUMENTS AND PARTS THEREOF ARE THE PROPERTY OF ENGINEERING MANAGEMENT INC. AND SHALL REMAIN THE PROPERTY OF ENGINEERING MANAGEMENT INC. UNLESS OTHERWISE SPECIFIED IN WRITING. NO PART OF THESE DOCUMENTS SHALL BE REPRODUCED OR TRANSMITTED IN ANY FORM OR BY ANY MEANS, ELECTRONIC OR MECHANICAL, INCLUDING PHOTOCOPYING, RECORDING, OR BY ANY INFORMATION STORAGE AND RETRIEVAL SYSTEM, WITHOUT THE WRITTEN PERMISSION OF ENGINEERING MANAGEMENT INC.

DATE	NO.	DESCRIPTION
9/29/17	A	RELEASED FOR BID
9/13/17	B	COLUMN FOOTINGS REVISED

EMI ENGINEERING MANAGEMENT INCORPORATED
CIVIL AND ENVIRONMENTAL ENGINEERS
303 SWANSON DRIVE
LAWRENCEVILLE, GEORGIA 30043
PHONE: (770) 962-1387 FAX: (770) 962-8010

**EQUIPMENT BUILDING
TOWN OF BRASELTON**

FOUNDATION PLAN
SHEET TITLE
DESIGN BY: DWB
DRAWN BY: DWB
CHECKED BY: DWB

STAMP
REGISTERED PROFESSIONAL ENGINEER
NO. 11858
RONALD K. BAKER

05/23/17 DATE
15-035 JOB NUMBER
z: Projects FILE LOCATION

S1

PROJECT SHEET