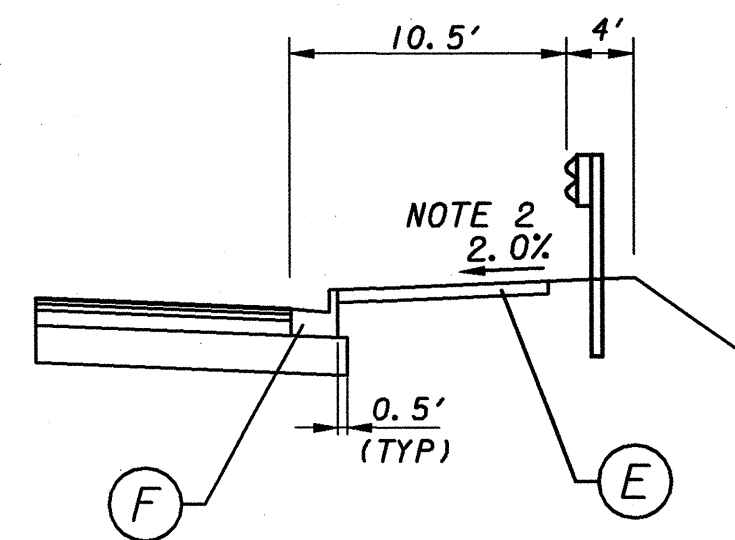
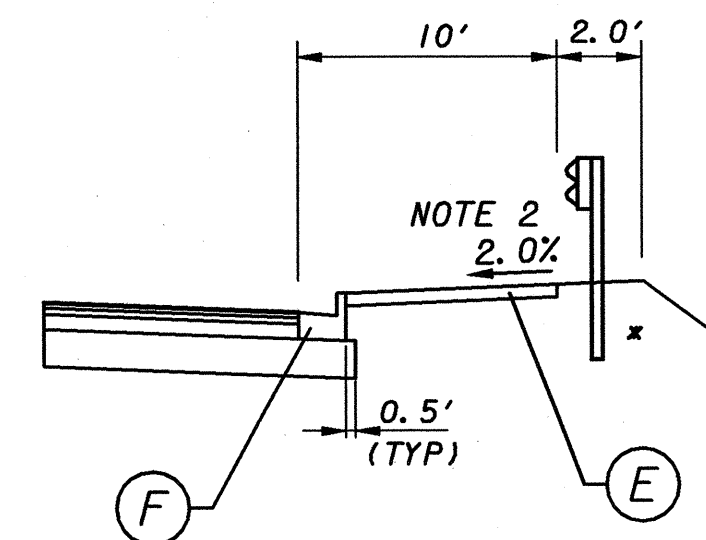


**PAVEMENT DESIGN**

- (A) 165 lbs/yd ASPHALTIC CONCRETE  
12.5 mm SUPERPAVE
- (B) 220 lbs/yd ASPHALTIC CONCRETE  
19 mm SUPERPAVE
- (C) 880 lbs/yd<sup>2</sup> ASPHALTIC CONCRETE BASE  
25 mm SUPERPAVE
- (D) 12" GRADED AGGREGATE BASE
- (E) 8' CONCRETE SIDEWALK  
4" THICK TYPICAL  
GA. DOT CONST. DETAIL A-3
- (F) 8" x 30" CURB & GUTTER  
GA. DOT STD.  
9032 B, TYPE 2
- (G) ASPHALTIC CONCRETE LEVELING, AS REQUIRED
- (H) PAVEMENT REINFORCING FABRIC

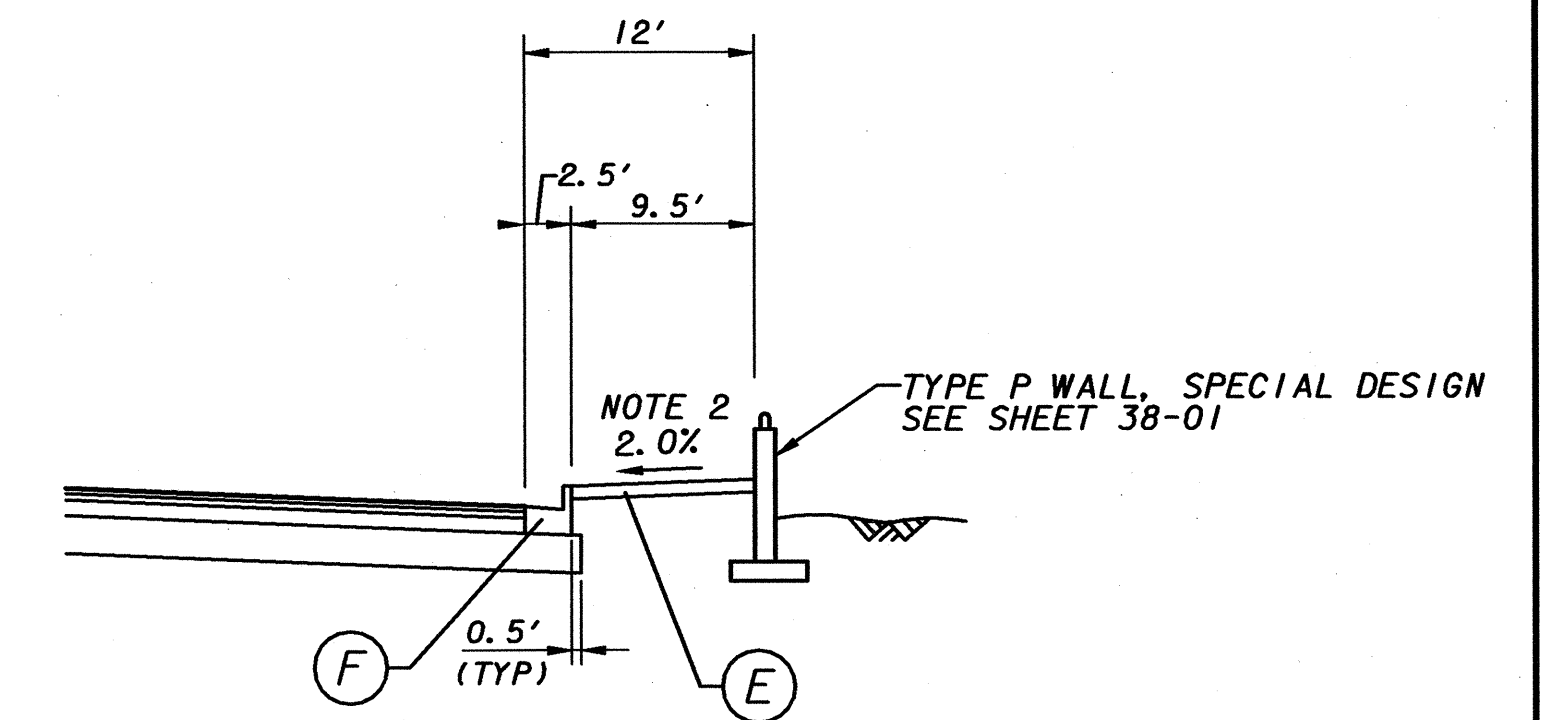


STA 57+49.70 (SR 53) TO STA 25+00 (SR 124)  
STA 55+81.33 TO 56+49.53 (SR 53)

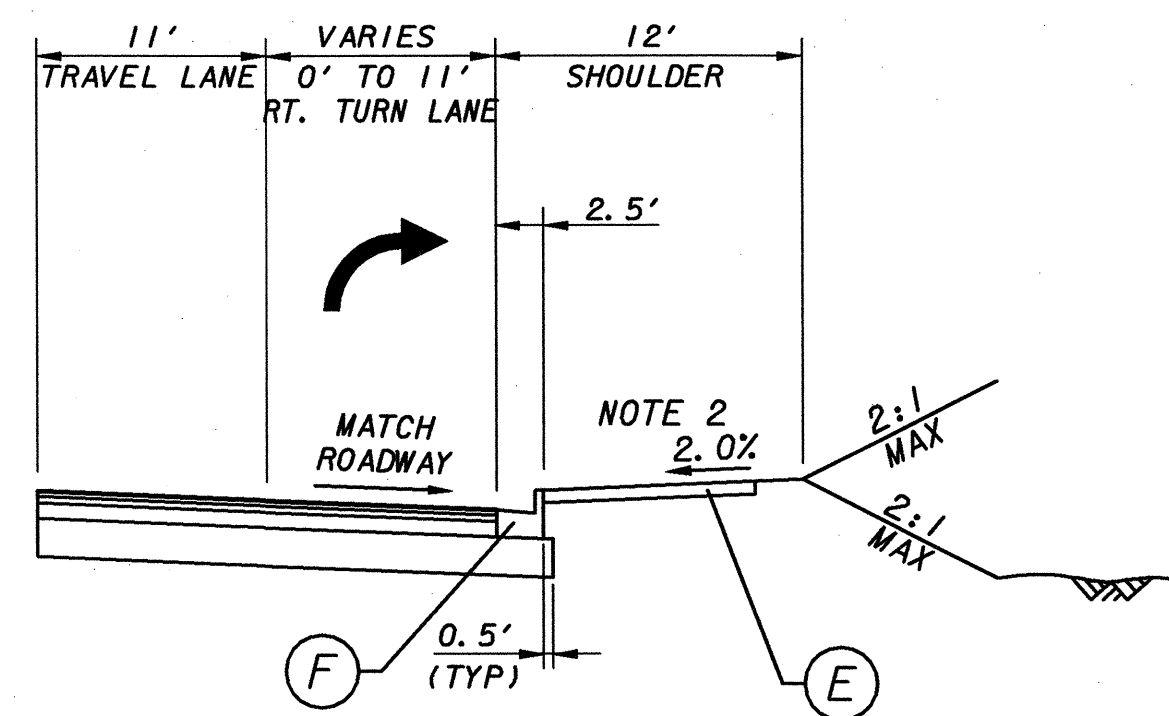


STA 30+61 TO 33+00 (SR 124)  
\* ADDITIONAL LENGTH POST REQUIRED

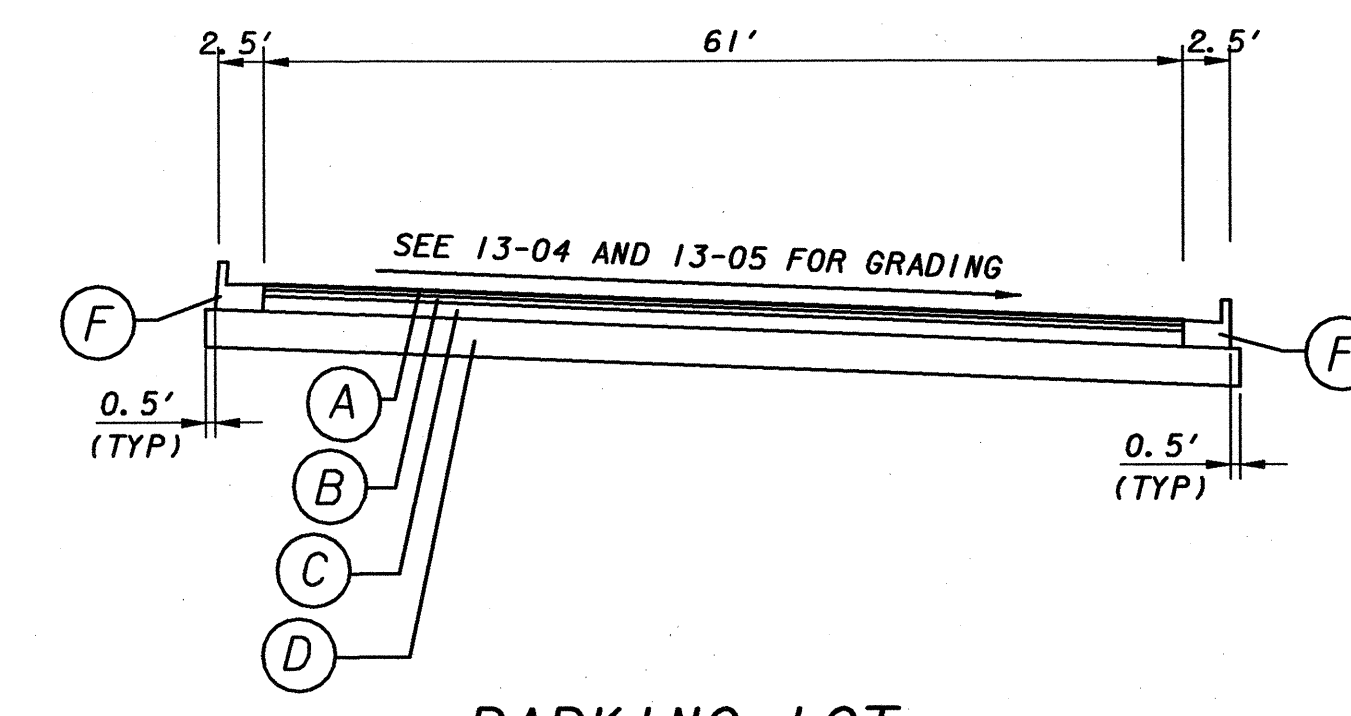
**GUARDRAIL SHOULDER DETAIL NO. 1**  
**CURB & GUTTER**  
SEE CONSTRUCTION PLANS FOR LOCATIONS  
SEE GA. DOT STD. 4280 FOR ADDITIONAL DETAILS



**WALL SHOULDER DETAIL NO. 1**  
**CURB & GUTTER**  
SEE CONSTRUCTION PLANS FOR LOCATIONS



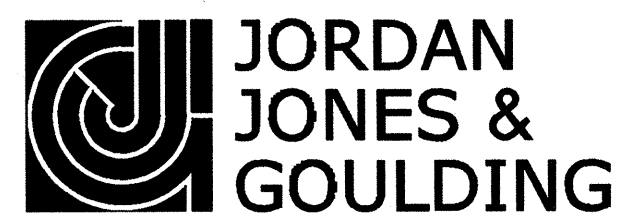
**TURN LANE DETAIL NO. 1**  
**W/RIGHT TURN LANE, TAPER & CURB AND GUTTER**  
SEE CONSTRUCTION PLANS FOR LOCATIONS



**PARKING LOT**  
**CURB & GUTTER**  
SEE CONSTRUCTION PLANS FOR LOCATIONS

- NOTES:
1. GUTTER ON HIGH SIDE OF SUPERELEVATION TO SPILL AT SE RATE.
  2. CONCRETE SIDEWALK SHALL BE TREATED WITH A SURFACE RETARDER FOR AN EXPOSED AGGREGATE FINISH. RETARDER SHALL BE TOPCAST \*50 BY DAYTON SUPERIOR, OR ARTEVIA EXPOSED \*50 BY LAFARGE NORTH AMERICA. APPLY PER MANUFACTURER'S SPECIFICATIONS.

NOT TO SCALE



**JORDAN  
JONES &  
GOULDING**

REVISION DATES


TOWN OF BRASELTON

OFFICE:

**TYPICAL SECTIONS**

SR53 & SR124  
INTERSECTION REALIGNMENT

DRAWING No.  
**5-05**