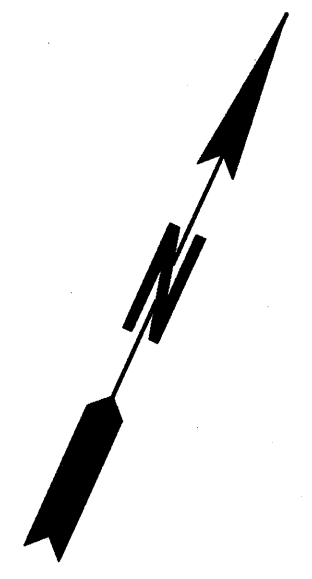
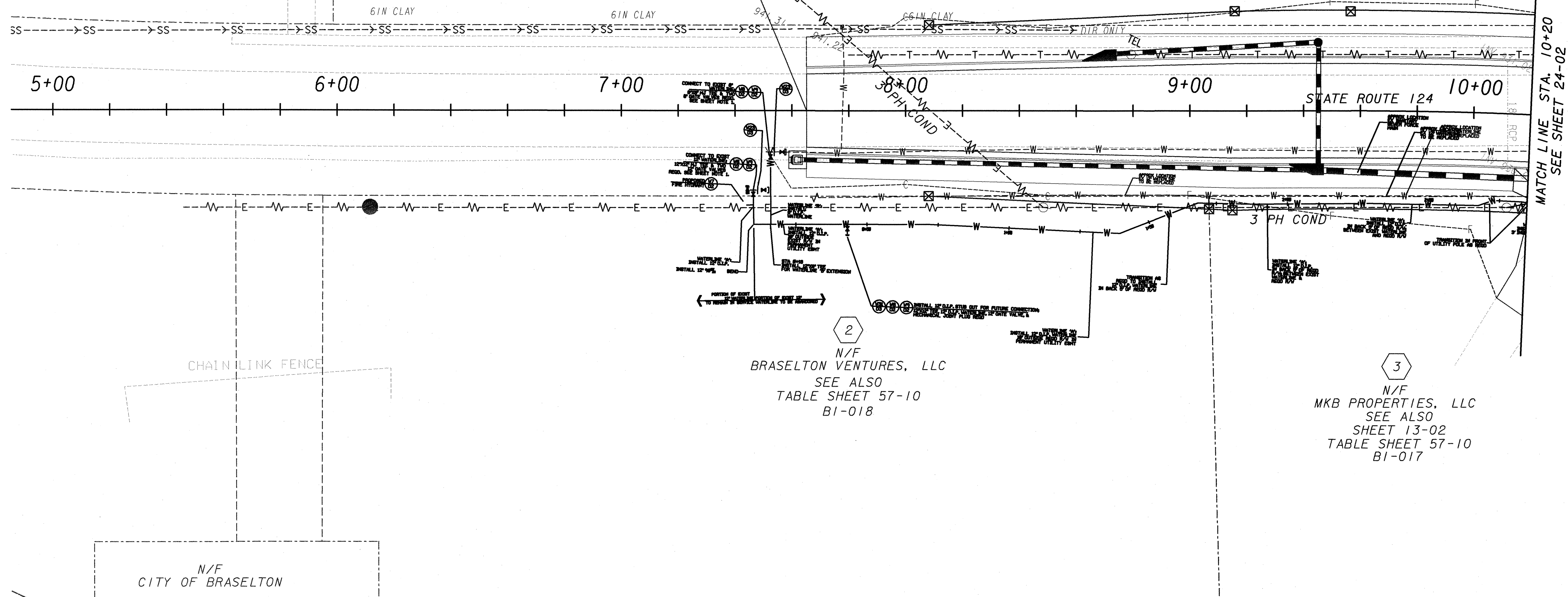


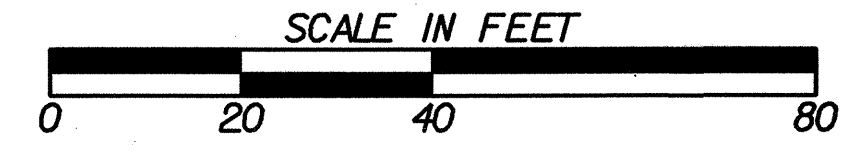
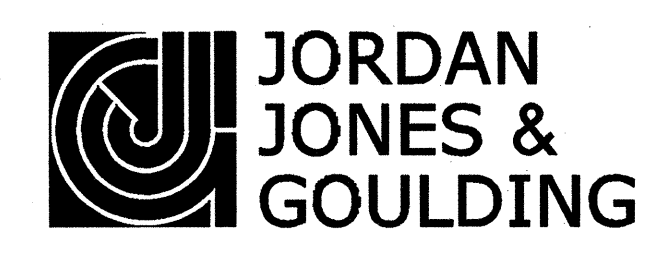
N/F
JAMES & ANGELA SALTER

1
N/F
BRASELTON VENTURES, LLC
SEE ALSO
SHEET 13-02
TABLE SHEET 57-10
BI-001A

BEGIN PROJECT
BEGIN CONSTRUCTION
STA 7+65.00
N 1494473.1320
E 2417574.6304
LAT. 34°06'28"
LONG. 83°46'01"



EASEMENT FOR CONSTRUCTION & MAINTENANCE OF SLOPES		EXISTING PROPERTY LINE	
EASEMENT FOR CONSTRUCTION & MAINTENANCE OF DRAINAGE		REQUIRED R/W LINE	
EASEMENT FOR CONSTR OF SLOPES		CONSTRUCTION LIMITS	
EASEMENT FOR CONSTR OF DRIVES		R/W AND LIMIT OF ACCESS	
		EXISTING R/W LINE	
		PAVEMENT OVERLAY	



REVISION DATES	

TOWN OF BRASELTON	
OFFICE:	
UTILITY PLANS	
SR53 & SR124 INTERSECTION REALIGNMENT	
DRAWING No.	24-01